



SOLID STAR[®]



YANTAI C.S.I. RUBBER CO., LTD.



SOLID STAR®

YANTAI C.S.I. RUBBER CO., LTD.



In 1994, Yantai C.S.I. Rubber(Y.T.C.S.I.) imported the turn-key project of the most advanced technology of solid tire manufacturing from ITL in Canada. Ever since then, Y.T.C.S.I. has been one of the leading manufacturers of solid Rubber press-on and pneumatic shaped solid tires in China. Its product are widely used on various engineering vehicles such as forklift, industrial vehicles, construction machinery and trailers serving in airports, seaports and other working sites etc. "Solid Star" brand tires is developed by Y.T.C.S.I. itself and it meet the TRA in USA, ETRTO in Europe and JATMA in Japan. Known for its production technology and product design, Y.T.C.S.I has been certified ISO 9001:2000 since 2000. The production capacity of Y.T.C.S.I. is 350,000 pcs annually. We provide OEM services for Caterpillar®, MCF®, Nissan®, Clark®, in oversea market. In the domestic market, we are the OEM supplier for the world famous forklift manufacturers like Linde, Toyota, Heli, TCM, Hangzhou, Komatsu, Nichiyu, Nissan, Doosan, Tailift etc. Furthermore, we also make solid tires with customer's private brand under Eurosoft®, ITL®, Marangoni®, Jumbo®, Exaflex®, Duramax®, Total Sorce®, Magna®; In the filed of aftermarket, our sales network spread all over mainland China.

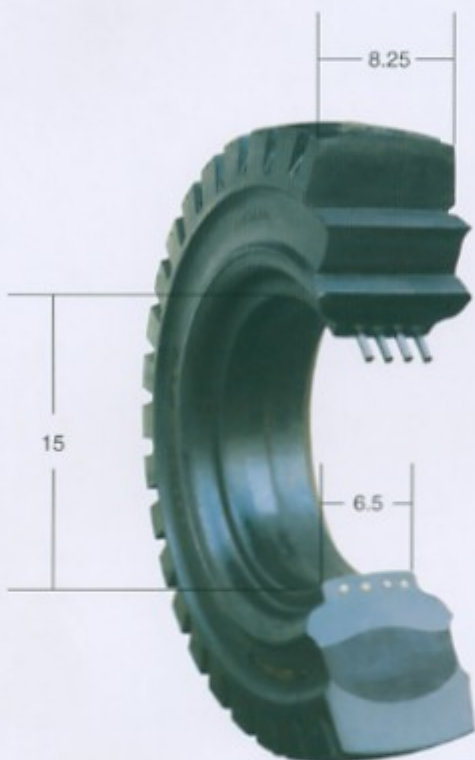
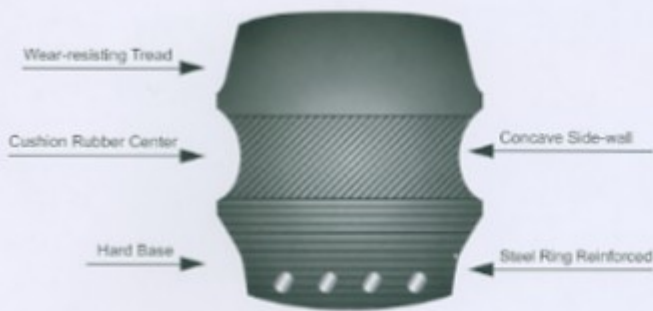
Y.T.C.S.I. always believes that business should be conducted with integrity, respect and professionalism. We promote creativity in solutions, speed in implementation and satisfaction for our customers. Our commitment is to anticipate market needs and exceed our customers' expectations. The Customer Service Team makes sure our company values are maintained.



RESILIENT TIRES

Resilient tires

The resilient tires are compatible with the standard rims of pneumatic tires, so they can replace pneumatic tires without changing rims. It has such advantages like longer wear, long life, low rolling resistance, low energy consumption, puncture-free etc., it is the ideal replacement of pneumatic tire in the fields of low speed, high load circumstances. Cushion rubber center provides good shock absorption, reducing damage and improves ride, High strength base rubber and steel reinforce base provides absolute rim adherence (no spinning, no fining).





SOLID STAR[®]

RESILIENT TIRES



SOLID STAR-AP Series

— Advanced technology, Higher load capacity, Lower rolling resistance, Lower energy consumption and it is suitable for various forklift trucks and other industrial vehicles.

SOLID STAR-AP

Size of Tire	Rim Size	Outside Diameter	Static Radius Under Load	Section Width	Approx. Net Weight	Load Capacity(kg)						Other Industrial Vehicles (kg)	
						Counter Balanced Lift Trucks							
						10km/h		16km/h		25km/h			
		mm	mm	± 5mm	± 1.5%	Driving	Steering	Driving	Steering	Driving	Steering	16km/h	
1	4.00-8	3.00D,3.75	423	200	115	12.3	1055	845	1020	765	950	715	730
2	5.00-8	3.00D,3.50D	469	221	126	17.1	1210	970	1175	880	1095	820	840
3	6.00-9	4.00E	545	256	140	25.3	1920	1535	1855	1390	1730	1295	1325
4	6.00-15	4.50E	710	331	148	44.6	2830	2095	2705	2000	2455	1820	1895
5	6.50-10	5.00F	597	281	158	35.0	2640	2110	2545	1910	2370	1780	1820
6	7.00-9	5.00S	578	260	170	34.0	2730	2015	2605	1925	2370	1750	1785
7	7.00-12	5.00S	683	322	168	46.3	3015	2410	2910	2185	2710	2035	2075
8	7.00-15	5.50S,6.00	759	360	178	58.0	3590	2870	3465	2600	3225	2420	2475
9	7.50-10	5.00F	647	303	172	46.3	2930	2345	2825	2120	2630	1975	2020
10	7.50-15	5.50F	774	367	200	74.5	3690	2950	3425	2570	3190	2395	2450
11	8.25-12	5.00S	735	346	205	71.0	3325	2660	3215	2410	2995	2245	2295
12	8.25-15	6.50T,5.50S	847	400	206	89.0	4940	3950	4765	3575	4440	3330	3405
13	8.25-20	6.50T,7.00	992	472	218	120.8	5425	4340	5240	3930	4880	3735	3475
14	15 × 4 1/2-8	3.00D,3.25I	380	179	106	9.4	905	725	875	655	805	605	625
15	16 × 6-8	4.33R	418	197	142	14.7	1500	1200	1445	1085	1345	1010	1035
16	18 × 7-8	4.33R	457	214	154	19.8	2350	1880	2265	1700	2110	1585	1620
17	21 × 8-9	6.00E	535	250	189	32.6	2810	2250	2715	2035	2530	1895	1940
18	23 × 9-10	6.50F	595	279	211	48.4	3420	2735	3300	2475	3075	2305	2355
19	27 × 10-12	8.00G	683	320	230	68.0	4465	3570	4315	3235	4020	3015	3080
20	28 × 9-15	7.00	706	335	207	60.9	4090	3270	3945	2960	3675	2755	2820
21	28 × 12 1/2-15	9.75	706	337	300	84.4	5735	4590	5540	4165	5170	3890	3955
22	200/50-10	6.50F	458	211	197	24.1	2370	1900	2290	1720	2135	1605	1630
23	250-15	7.00,7.50	735	348	226	71.0	4365	3490	4220	3160	3930	2955	3010
24	300-15	8.00	838	384	258	107.0	5990	4790	5780	4335	5380	4035	4130
25	355/65-15	9.75	823	384	301	123.0	7120	5700	6880	5170	6410	4820	4910

SOLID STAR-WP

Size of Tire	Rim Size	Outside Diameter	Static Radius Under Load	Section Width	Approx. Net Weight	Load Capacity(kg)						Other Industrial Vehicles (kg)	
						Counter Balanced Lift Trucks							
						10km/h		16km/h		25km/h			
		mm	mm	± 5mm	± 1.5%	Driving	Steering	Driving	Steering	Driving	Steering	16km/h	
1	4.50-12	3.00,3.50	553	260	120	22.2	1440	1150	1390	1045	1300	980	990
2	5.00-8	3.00D,3.50D	469	221	127	18.0	1210	970	1175	880	1095	820	840
3	5.50-15	4.50E	676	318	144	40.5	2525	1870	2415	1790	2195	1625	1690
4	6.00-9	4.00E	545	256	139	26.9	1920	1535	1855	1390	1730	1295	1325
5	6.00-15	4.50E	710	331	148	46.5	2830	2095	2705	2000	2455	1820	1895
6	6.50-10	5.00F	597	281	157	36.3	2640	2110	2545	1910	2370	1780	1820
7	7.00-12	5.00S	683	322	167	47.4	3015	2410	2910	2185	2710	2035	2075
8	7.00-15	5.50S,6.00	759	360	177	59.8	3590	2870	3465	2600	3225	2420	2475
9	8.25-12	5.00S	735	346	206	74.0	3325	2660	3215	2410	2995	2245	2295
10	8.25-15	6.50T,5.50S	847	400	205	91.6	4940	3950	4765	3575	4440	3330	3405
11	15 × 4 1/2-8	3.00D,3.25I	380	179	106	10.0	905	725	875	655	805	605	625
12	16 × 6-8	4.33R	418	197	156	17.0	1500	1200	1445	1085	1345	1010	1035
13	18 × 7-8	4.33R	457	214	145	20.3	2350	1880	2265	1700	2110	1585	1620
14	21 × 8-9	6.00E	535	250	189	34.5	2810	2250	2715	2035	2530	1895	1940
15	23 × 9-10	6.50F	595	279	211	50.5	3420	2735	3300	2475	3075	2305	2355
16	28 × 9-15	7.00	706	335	217	64.00	4090	3270	3945	2960	3675	2755	2820

SOLID STAR-WP Series

— It has the advantages of high load, wide grounding area, strong seizing force, low rolling resistance, low energy consumption etc.





SOLID STAR®

RESILIENT TIRES



SOLID STAR-WP-I

SOLID STAR-WP-I Series

— It has the advantages of high load, wide grounding area, strong seizing force, low rolling resistance, low energy consumption etc.

	Size of Tire	Rim Size	Outside Diameter	Static Radius Under Load	Section Width	Approx. Net Weight	Load Capacity(kg)						Other Industrial Vehicles (kg)
							Counter Balanced Lift Trucks						
							10km/h		16km/h		25km/h		
		mm	mm	± 5mm	± 1.5%	Driving	Steering	Driving	Steering	Driving	Steering	16km/h	
1	5.00-8	3.00D,3.50D	469	221	127	18.5	1210	970	1175	880	1095	820	840
2	5.50-15	4.50E	676	318	144	41.0	2525	1870	2415	1790	2195	1625	1690
3	6.00-9	4.00E	545	256	148	28.0	1920	1535	1855	1390	1730	1295	1325
4	6.50-10	5.00F	597	281	158	37.5	2640	2110	2545	1910	2370	1780	1820
5	6.50-16	5.50F	748	364	165	59.0	3425	2740	3285	2465	3080	2310	2365
6	7.00-12	5.00S	683	322	167	48.0	3015	2410	2910	2185	2710	2035	2075
7	7.00-15	5.50S,6.00	759	360	186	64.5	3590	2870	3465	2600	3225	2420	2475
8	7.50-16	5.50F	819	389	181	77.0	3910	3130	3780	2835	3520	2640	2700
9	8.25-12	5.00S	735	346	206	76.0	3325	2660	3215	2410	2995	2245	2295
10	8.25-15	6.50T,5.50S	847	400	212	97.0	4940	3950	4765	3575	4440	3330	3405
11	8.25-20	6.50T,7.00	992	472	219	130.2	5425	4340	5240	3930	4880	3735	3475
12	15 × 4 1/2-8	3.00D,3.25I	380	179	106	10.0	905	725	875	655	805	605	625
13	16 × 6-8	4.33R	418	197	156	16.8	1500	1200	1445	1085	1345	1010	1035
14	18 × 7-8	4.33R	457	214	154	20.7	2350	1880	2265	1700	2110	1585	1620
15	21 × 8-9	6.00E	535	250	189	35.0	2810	2250	2715	2035	2530	1895	1940
16	23 × 9-10	6.50F	595	279	211	52.0	3420	2735	3300	2475	3075	2305	2355
17	23 × 10-12	8.00G	597	282	230	52.0	4005	3205	3845	2885	3605	2705	2765
18	27 × 10-12	8.00G	683	320	236	73.0	4465	3570	4315	3235	4020	3015	3080
19	28 × 9-15	7.00	706	335	217	64.0	4090	3270	3945	2960	3675	2755	2820
20	200/50-10	6.50F	458	211	198	25.3	2370	1900	2290	1720	2135	1605	1630
21	250-15	7.00,7.50	735	348	235	77.5	4365	3490	4220	3160	3930	2955	3010
22	300-15	8.00	838	384	256	115.5	5990	4790	5780	4335	5380	4035	4130
23	355/65-15	9.75	823	384	301	134.0	7120	5700	6880	5170	6410	4820	4910

HALO-SOLID STAR Series

— Solid Star AP, and Solid Star WP-I series of tires can be designed to Halo(or Clip) form base in order to fit one-piece rim, which makes the installation of rim much easier and more convenient.



RESILIENT TIRES



SOLID STAR-WP-II Pattern Series

— new design tire for forklift; deeper lug and much stronger pull force.

Size of Tire	Rim Size	Outside Diameter	Static Radius Under Load	Section Width	Approx. Net Weight	Load Capacity(kg)						Other Industrial Vehicles (kg)	
						Counter Balanced Lift Trucks							
						10km/h		16km/h		25km/h			
		mm	mm	± 5mm	± 1.5%	Driving	Steering	Driving	Steering	Driving	Steering	16km/h	
1	5.00-8	3.00D	469	221	127	21.2	1210	970	1175	880	1095	820	840
2	6.00-9	4.00E	545	256	140	27.3	1920	1535	1855	1390	1730	1295	1325
3	6.50-10	5.00F	597	281	158	38.2	2640	2110	2545	1910	2370	1780	1820
4	7.00-12	5.00S	683	322	168	50.5	3015	2410	2910	2185	2710	2035	2075
5	7.00-15	5.50S	759	360	186	69.0	3590	2870	3465	2600	3225	2420	2475
6	8.25-15	6.50T	847	400	212	106.0	4940	3950	4765	3575	4440	3330	3405
7	15 × 4 1/2-8	3.00D	380	179	106	10.8	905	725	875	655	805	605	625
8	16 × 6-8	4.33R	418	197	150	18.5	1500	1200	1445	1085	1345	1010	1035
9	18 × 7-8	4.33R	457	214	154	23.5	2350	1880	2265	1700	2110	1585	1620
10	21 × 8-9	6.00E	535	250	189	39.0	2810	2250	2715	2035	2530	1895	1940
11	28 × 9-15	7.00	706	335	206	63.5	4090	3270	3945	2960	3675	2755	2820

Size of Tire	Rim Size	Outside Diameter	Static Radius Under Load	Section Width	Approx. Net Weight	Load Capacity(kg)						Other Industrial Vehicles (kg)	
						Counter Balanced Lift Trucks							
						10km/h		16km/h		25km/h			
		mm	mm	± 5mm	± 1.5%	Driving	Steering	Driving	Steering	Driving	Steering	16km/h	
1	2.00-8	2.50C	310	150	100	5.4	550	440	530	400	495	370	380
2	3.20-8	3.00D	328	154	111	6.4							500
3	3.60-8	3.00D	368	172	113	9.0							600
4	4.00-8	3.00D,3.75	423	200	115	12.3	1055	845	1020	765	950	715	730
5	7.00-9	5.00S	578	260	170	40.0	2730	2015	2605	1925	2370	1750	1785
6	7.00-12	5.00S	683	322	168	50.0	3015	2410	2910	2185	2710	2035	2075
7	8.25-15	6.50T,5.50S	847	400	212	98.0	4940	3950	4765	3575	4440	3330	3405
8	8.25-20	6.50T,7.00	992	472	219	131.2	5425	4340	5240	3930	4880	3735	3475
9	930 × 305		910	416	290	164.0	7190	5750	6950	5225	6480	4870	4960
10	10.00-20	7.50,8.00	1073	508	252	175.0	7240	5795	6995	5245	6510	4885	4995

SOLID STAR-RT Series

— Low rolling resistance, strong puncture-free capacity, high loading capacity, suitable for the tow vehicles in airports, seaports, station etc.





SOLID STAR®

BIG ENGINEER TIRE



SOLID STAR-ET Series

— Higher loading, less rolling resistance, lower energy consumption, higher wear and anti-puncture resistance, no exploding, lower cost of maintenance and it is suitable for large engineering vehicles, special martial vehicles, material mixing machineries in metallurgy enterprises, etc.

Size of Tire	Rim Size	Outside Diameter mm	Static Radius Under Load mm	Section Width ± 5mm mm	Approx. Net Weight ± 1.5% kg	Load Capacity(kg)						Other Industrial Vehicles (kg) 16km/h	
						Counter Balanced Lift Trucks							
						10km/h		16km/h		25km/h			
Driving	Steering	Driving	Steering	Driving	Steering								
1	9.00-16	6.50	884	418	218	109.5	5135	4110	4965	3725	4625	3470	3550
2	9.00-20	6.50T,7.00	1038	471	238	151.8	6450	5160	6235	4675	5805	4355	4450
3	10.00-20	7.50,8.00	1073	508	252	175.0	7240	5795	6995	5245	6510	4885	4995
4	11.00-20	7.50,8.00	1058	502	277	195.0	7560	6050	7300	5490	6810	5120	5210
5	12.00-20	8.00,8.50	1146	528	290	235.0	8445	6755	8105	6080	7600	5700	5825
6	12.00-24	8.50	1247	591	309	287.0	9575	7655	9235	6925	8600	6450	6595
7	14.00-20	10.00	1260	590	332	363.0	10800	8640	10430	7840	9730	7315	7450
8	14.00-24	10.00	1368	636	335	391.0	11865	9490	11390	8545	10680	8010	8185



Suitable for molten iron vehicles of metallurgy and steel enterprises



Suitable for dump trucks at seaport, mine, metallurgy enterprises



Suitable for material mixing machines of metallurgy and steel enterprises



Suitable for trailers at seaport, mine, metallurgy and steel enterprises

RESILIENT TIRES



Loader for Metallurgy and Harbor



Gantry Crane

Size of Tire	Rim Size	Outside Diameter mm	Static Radius Under Load mm	Section Width ± 5mm mm	Approx. Net Weight ± 1.5% kg	Load Capacity(kg)						Other Industrial Vehicles (kg) 16km/h	
						Counter Balanced Lift Trucks							
						10km/h		16km/h		25km/h			
Driving	Steering	Driving	Steering	Driving	Steering	Driving	Steering	16km/h					
1	17.50-25	14.00	1370	640	458	590.0	17720	14180	16880	12690	15960	12000	12220
2	23.50-25	19.50	1620	760	580	1106.0	30830	24660	29790	22400	27770	20880	21260
3	18.00-25	13.00	1620	730	480	883.0	21000	16500	19500	13600	18500	13000	14700

SOLID STAR-OTR Series

—Higher loading, less rolling resistance, lower energy consumption, higher wear and anti-puncture resistance, no exploding, lower cost of maintenance and it is suitable for large engineering vehicles, special martial vehicles, material mixing machineries in metallurgy enterprises, etc.





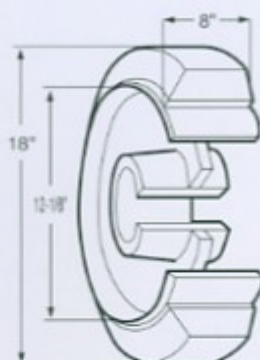
SOLID STAR®

PRESS-ON SOLID TIRE



TR

SM



Press-on tires are manufactured with Injection Molding System and are applicable for the industrial vehicles running on the smooth road. It has characteristics as follows:

1. Lower barycenter
2. Lower energy consumption
3. Anti-puncture
4. Lower maintenance cost
5. Higher density of rubber
6. Higher wear resistance
7. Good stability
8. Tire base are made to combine with steel wheel very tightly so as to avoid peeling off between them.

— More stability while running with loading, lower energy consumption and it is suitable for tow trucks and other machineries running and driving slowly.

SM/TR

	Size of Tire		Types of Pattern	Weight(kg) ± 1.5%	Load Capacity(kg)				Other Industrial Vehicles 16km/h
	Inch(in)	Millimeter(mm)			Counter Balanced Lift Trucks				
					10km/h Driving Steering		16km/h Driving Steering		
1		175 × 75 × 100	SM	2.8	350	320	330	300	260
2		177 × 76 × 107	SM	3.0	370	330	350	320	280
3		204 × 76 × 120	SM	3.4	400	360	380	350	310
4	9 × 5 × 5	229 × 127 × 127	SM	7.0	890	790	850	785	680
5	10 × 4 × 6½	254 × 102 × 165.1	SM	6.2	720	640	685	630	550
6		254 × 120 × 190	SM	4.4	910	810	870	805	700
7	10 × 4½ × 6½	254 × 121 × 165.1	SM/TR	7.3	890	790	850	790	680
8	10 × 5 × 6½	254 × 127 × 165.1	SM/TR	8.0	940	840	900	830	725
9		255 × 120 × 169.2	SM	8.3	870	780	830	770	670
10	10½ × 5 × 6½	267 × 127 × 165.1	SM/TR	8.2	1000	890	950	880	770
11		300 × 125(× 216)	TR	10.00	1065	950	1010	935	820
12	12 × 5 × 8	305 × 127 × 203.2	SM	10.0	1105	990	1050	970	850
13	12 × 5½ × 8	305 × 140 × 203.2	TR	10.85	1240	1110	1180	1090	950
14		315 × 145(× 180.5)	TR	13.20	1375	1230	1310	1210	1060
15	13 × 4½ × 8	330 × 114 × 203.2	TR	10.40	1040	930	990	920	800
16		330 × 145 × 194	SM	14.0	1410	1260	1340	1240	1080
17	13½ × 4½ × 8	343 × 114 × 203.2	SM/TR	11.4	1070	955	1020	940	820
18	13½ × 5½ × 8	343 × 140 × 203.2	SM/TR	14.5	1400	1250	1340	1240	1080
19	14 × 4½ × 8	356 × 114 × 203.2	SM/TR	10.7	1090	970	1040	960	840
20	15 × 5 × 11¼	381 × 127 × 285.8	SM	13.5	1290	1150	1230	1140	990
21	15½ × 6 × 10	394 × 152 × 254	SM	19.0	1735	1540	1660	1535	1335
22	16 × 5 × 10½	406 × 127 × 266.7	SM/TR	15.4	1400	1250	1340	1240	1080
23	16 × 6 × 10½	406 × 152 × 266.7	SM/TR	17.7	1780	1580	1700	1570	1370
24	16½ × 5 × 11¼	413 × 127 × 285.8	SM/TR	15.3	1415	1260	1350	1250	1090

SM/TR

	Size of Tire		Types of Pattern	Weight(kg) ± 1.5%	Load Capacity(kg) Counter Balanced Lift Trucks				Other Industrial Vehicles 16km/h
	Inch(in)	Millimeter(mm)			10km/h		16km/h		
					Driving	Steering	Driving	Steering	
25	16 ¹ / ₄ × 6 × 11 ¹ / ₄	413 × 152 × 285.8	SM/TR	18.2	1780	1580	1710	1570	1370
26	16 ¹ / ₄ × 7 × 11 ¹ / ₄	413 × 178 × 285.8	SM	21.9	2150	1910	2050	1900	1650
27		450/300-305	SM	44.8	4340	3875	4130	3820	3340
28	18 × 5 × 12 ¹ / ₄	457 × 127 × 308	SM/TR	17.7	1530	1360	1460	1350	1170
29	18 × 6 × 12 ¹ / ₄	457 × 152 × 308	SM/TR	20.8	1950	1740	1860	1720	1500
30	18 × 7 × 12 ¹ / ₄	457 × 178 × 308	SM/TR	24.8	2370	2110	2270	2100	1820
31	18 × 8 × 12 ¹ / ₄	457 × 203 × 308	SM/TR	28.4	2790	2480	2670	2470	2150
32	18 × 9 × 12 ¹ / ₄	457 × 229 × 308	SM/TR	35.5	3215	2860	3070	2840	2470
33	20 × 8 × 16	508 × 203 × 406.4	SM/TR	30.7	2790	2480	2670	2470	2150
34	21 × 7 × 15	533 × 178 × 381	SM/TR	30.2	2670	2380	2550	2360	2050
35	21 × 8 × 15	533 × 203 × 381	SM/TR	34.9	3140	2795	3000	2780	2420
36	21 × 9 × 15	533 × 229 × 381	SM	42.0	3620	3220	3460	3200	2790
37	22 × 6 × 17 ¹ / ₄	559 × 152 × 450.85	SM/TR	25.5	2185	1945	2085	1925	1680
38	22 × 8 × 16	559 × 203 × 406.4	SM/TR	40.5	3260	2900	3110	2880	2505
39	22 × 9 × 16	559 × 229 × 406.4	SM/TR	45.5	3750	3340	3590	3320	2890
40	22 × 12 × 16	559 × 305 × 406.4	SM	60.6	5235	4660	5000	4630	4030
41	22 × 14 × 16	559 × 356 × 406.4	SM	69.0	6250	5580	5950	5510	4810
42	22 × 16 × 16	559 × 406.4 × 406.4	SM	79.0	7250	6470	6900	6390	5580
43	26 × 10 × 20	660 × 254 × 508	SM	61.0	4810	4290	4580	4240	3700
44	28 × 10 × 22	711 × 254 × 558.8	SM	63.4	5090	4530	4860	4500	3910
45	28 × 12 × 22	711 × 305 × 558.8	SM/TR	79.3	6270	5580	5990	5550	4825
46	28 × 16 × 22	711 × 406.4 × 558.8	SM	105.5	8640	7690	8260	7650	6650
47	36 × 16 × 30	915 × 406.4 × 762	SM	175	10440	9290	9970	9230	8030

Note: 1.tolerance of inner girth of baseband: + 0.64mm; 2.tolerance of diameter of the rim:+0.127 - -0.000mm; 3.tolerance of width of baseband:+0.000 - -0.707mm

Non-Marking Tires

High Performance Non-Marking tires with light color or other colorful rubber compound are designed to operate where clean floors are a priority. No mark is left on the ground when it is running or braking, especially suitable for the application of enterprises where contamination is strictly prohibited, such as pharmacy, catering trade, textile, electron, aviation, etc. Any sizes of black Resilient and Press-on tires can be made into Non-Marking tire.



OEM CUSTOMERS

Linde

TOYOTA

CATERPILLAR

MCF

NISSAN

KOMATSU

DOOSAN

CLARK

HELI

HANGZHOU

TCM

NICHYU

DALIAN

Vailift

ADD: No.2 Fenghuangtai Road, Yantai, China

TEL:(535)6529547

FAX:(535)6533493 6530651

P.C.:264002

E-mail:ytzc@ec.com.cn

Http://www.csirubber.com.